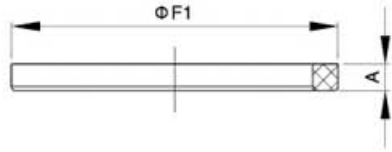


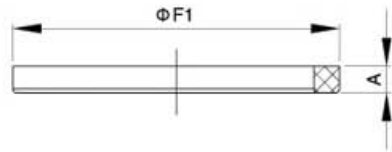
卫生级由任系列
Sanitary Union Series

由任垫圈 Gasket for Union
DIN 1020001



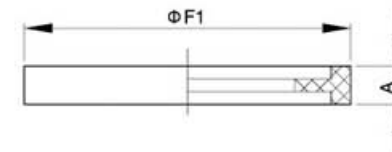
Size	A	F1				kg
DN15	5.0	26.0				
DN20	5.0	33.0				
DN25	5.0	40.0				
DN32	5.0	46.0				
DN40	5.0	52.0				
DN50	5.0	64.0				
DN65	5.0	81.0				
DN80	6.0	95.0				
DN100	6.0	114.0				
DN125	7.0	142.0				
DN150	7.0	167.0				

由任垫圈 Gasket for Union
SMS 1020002



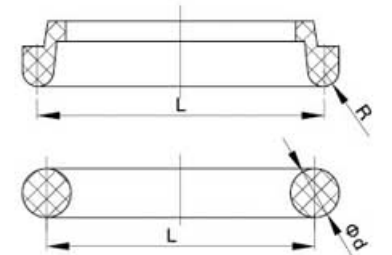
Size	A	F1				kg
25	5.5	33.0				
32	5.5	40.0				
38	5.5	48.0				
51	5.5	61.0				
63	5.5	73.0				
76	6.0	86.0				
89	6.0	99.0				
102	6.0	114.0				

由任垫圈 Gasket for Union
ISO 1020003



Size	A	F1				kg
1"	7.0	32.5				
1 1/2"	7.0	46.0				
2"	7.0	59.5				
2 1/2"	7.0	73.0				
3"	7.0	86.5				
4"	7.0	119.0				

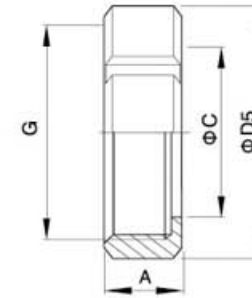
由任垫圈 Gasket for Union
RJT 1020004



Size	L	R	d			kg
1"	33.3	3.2	6.6			
1 1/2"	46.0	3.2	6.6			
2"	58.7	3.2	6.6			
2 1/2"	71.4	3.2	6.6			
3"	84.1	3.2	6.6			
4"	109.5	3.2	6.6			

卫生级由任系列
Sanitary Union Series

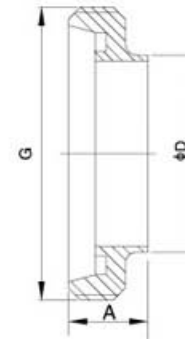
圆螺母 Round Nut
DIN11850 1023005



Size	A	G	D5	C		kg
DN15	18.0	RD34 x 1/8	44.0	25.0		
DN20	19.0	RD44 x 1/6	54.0	31.0		
DN25	21.0	RD52 x 1/6	62.0	36.0		
DN32	21.0	RD58 x 1/6	68.0	42.0		
DN40	21.0	RD65 x 1/6	78.0	49.0		
DN50	22.0	RD78 x 1/6	92.0	62.0		
DN65	24.0	RD95 x 1/6	110.0	80.0		
DN80	28.0	RD110 x 1/4	126.0	94.0		
DN100	30.0	RD130 x 1/4	146.0	115.0		
DN125	32.0	RD160 x 1/4	178.0	138.0		
DN150	34.0	RD190 x 1/4	208.0	164.0		

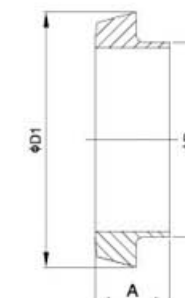
螺纹接头 Male
DIN11850 1023006

★有关密封圈请参照本画册P33页★ Please refer to page 33 for the gaskets.



Size	A	D	G			kg
DN15	18.0	18.0	RD34 x 1/8			
DN20	20.0	22.0	RD44 x 1/6			
DN25	21.0	28.0	RD52 x 1/6			
DN32	21.0	34.0	RD58 x 1/6			
DN40	21.0	40.0	RD65 x 1/6			
DN50	21.0	52.0	RD78 x 1/6			
DN65	23.0	70.0	RD95 x 1/6			
DN80	26.0	85.0	RD110 x 1/4			
DN100	28.0	104.0	RD130 x 1/4			
DN125	30.0	129.0	RD160 x 1/4			
DN150	32.0	154.0	RD190 x 1/4			

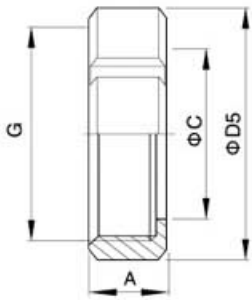
平接头 Liner
DIN11850 1021007



Size	A	D	D1			kg
DN15	14.0	18.0	28.0			
DN20	15.0	22.0	36.0			
DN25	17.0	28.0	43.0			
DN32	17.0	34.0	49.0			
DN40	17.0	40.0	55.0			
DN50	17.0	52.0	68.0			
DN65	17.0	70.0	85.0			
DN80	20.0	85.0	100.0			
DN100	24.0	104.0	120.0			
DN125	24.0	129.0	149.0			
DN150	24.0	154.0	176.0			

卫生级由任系列
Sanitary Union Series

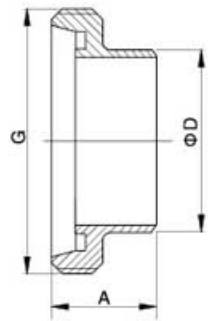
圆螺母 Round Nut
DIN11851 | 1023008



Size	A	G	D5	C	kg
DN15	18.0	RD34 x 1/8	44.0	25.0	
DN20	19.0	RD44 x 1/6	54.0	31.0	
DN25	21.0	RD52 x 1/6	62.0	36.0	
DN32	21.0	RD58 x 1/6	68.0	42.0	
DN40	21.0	RD65 x 1/6	78.0	49.0	
DN50	22.0	RD78 x 1/6	92.0	62.0	
DN65	24.0	RD95 x 1/6	110.0	80.0	
DN80	28.0	RD110 x 1/4	126.0	94.0	
DN100	30.0	RD130 x 1/4	146.0	115.0	
DN125	32.0	RD160 x 1/4	178.0	138.0	
DN150	34.0	RD190 x 1/4	208.0	164.0	

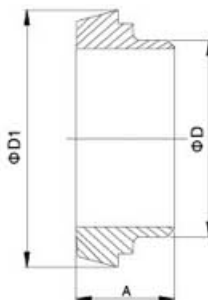
长型螺纹接头 Long Male
DIN11851 | 1021009

★ 有关密封圈请参照本画册P33页 ★ Please refer to page 33 for the gaskets.



Size	A	D	G	kg
DN15	21.0	21.0	RD34 x 1/8	
DN20	24.0	25.0	RD44 x 1/6	
DN25	29.0	31.0	RD52 x 1/6	
DN32	32.0	37.0	RD58 x 1/6	
DN40	33.0	43.0	RD65 x 1/6	
DN50	35.0	55.0	RD78 x 1/6	
DN65	40.0	72.0	RD95 x 1/6	
DN80	45.0	87.0	RD110 x 1/4	
DN100	54.0	106.0	RD130 x 1/4	
DN125	46.0	132.0	RD160 x 1/4	
DN150	50.0	157.0	RD190 x 1/4	

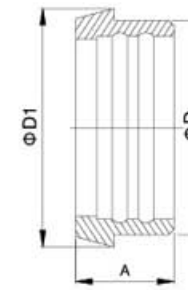
长型平接头 Long Liner
DIN11851 | 1021010



Size	A	D	D1	kg
DN15	17.0	21.0	28.0	
DN20	18.0	25.0	36.0	
DN25	22.0	31.0	43.0	
DN32	25.0	37.0	49.0	
DN40	26.0	43.0	55.0	
DN50	28.0	55.0	68.0	
DN65	32.0	72.0	85.0	
DN80	37.0	87.0	100.0	
DN100	44.0	106.0	120.0	
DN125	34.0	132.0	149.0	
DN150	37.0	157.0	176.0	

卫生级由任系列
Sanitary Union Series

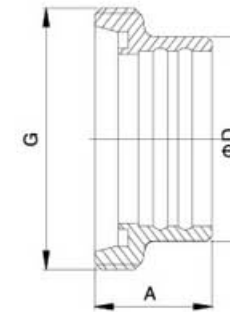
膨胀型平接头 Expanded Liner
DIN11851 | 1024011



Size	A	D	D1	kg
DN15	17.0	24.0	28.0	
DN20	18.0	30.0	36.0	
DN25	22.0	35.0	43.0	
DN32	25.0	41.0	49.0	
DN40	26.0	48.0	55.0	
DN50	28.0	61.0	68.0	
DN65	32.0	79.0	85.0	
DN80	37.0	93.0	100.0	
DN100	44.0	114.0	120.0	
DN125	34.0	137.0	149.0	
DN150	37.0	163.0	176.0	

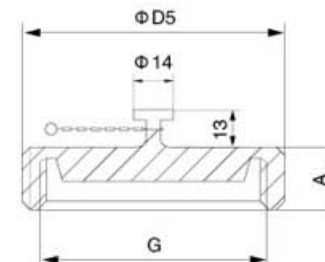
膨胀型螺纹接头 Expanded Male
DIN11851 | 1024012

★ 有关密封圈请参照本画册P33页 ★ Please refer to page 33 for the gaskets.



Size	A	D	G	kg
DN15	21.0	24.0	RD34 x 1/8	
DN20	24.0	30.0	RD44 x 1/6	
DN25	29.0	35.0	RD52 x 1/6	
DN32	32.0	41.0	RD58 x 1/6	
DN40	33.0	48.0	RD65 x 1/6	
DN50	35.0	61.0	RD78 x 1/6	
DN65	40.0	79.0	RD95 x 1/6	
DN80	45.0	93.0	RD110 x 1/4	
DN100	54.0	114.0	RD130 x 1/4	
DN125	46.0	137.0	RD160 x 1/4	
DN150	50.0	163.0	RD190 x 1/4	

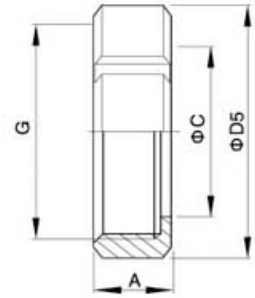
带链条盲螺母 Blind Cap with chain
DIN | 1023013



Size	A	G	D5	kg
DN15	18.0	RD34 x 1/8	44.0	
DN20	19.0	RD44 x 1/6	54.0	
DN25	21.0	RD52 x 1/6	62.0	
DN32	21.0	RD58 x 1/6	68.0	
DN40	21.0	RD65 x 1/6	78.0	
DN50	22.0	RD78 x 1/6	92.0	
DN65	24.0	RRD95 x 1/6	110.0	
DN80	28.0	RD110 x 1/4	126.0	
DN100	30.0	RD130 x 1/4	146.0	
DN125	32.0	RD160 x 1/4	178.0	
DN150	34.0	RD190 x 1/4	208.0	

卫生级由任系列
Sanitary Union Series

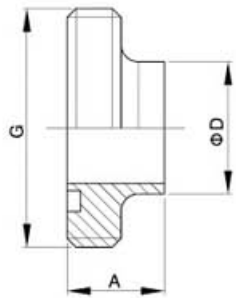
圆螺母 Round Nut
SMS 1023014



Size	A	G	D5	C	kg
19	18.0	RD34 x 1/8	44.0	25.0	
25	19.0	RD40 x 1/6	50.0	30.5	
32	21.0	RD48 x 1/6	60.0	37.0	
38	21.0	RD60 x 1/6	72.0	48.5	
51	22.0	RD70 x 1/6	82.0	58.5	
63	24.0	RD85 x 1/6	98.0	73.5	
76	26.0	RD98 x 1/6	114.0	86.0	
89	28.0	RD110 x 1/6	125.0	98.5	
102小	28.0	RD125 x 1/6	140.0	113.0	
102大	30.0	RD132 x 1/6	150.0	118.0	

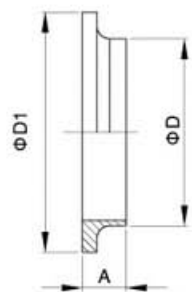
螺纹接头 Male
SMS 1021015

★ 有关密封圈请参照本画册P33页 ★ Please refer to page 33 for the gaskets.



Size	A	G	D	kg
19	16.0	RD34 x 1/8	19.1	
25	18.0	RD40 x 1/6	25.4	
32	20.0	RD48 x 1/6	31.8	
38	20.0	RD60 x 1/6	38.1	
51	21.0	RD70 x 1/6	50.8	
63	22.0	RD85 x 1/6	63.5	
76	24.0	RD98 x 1/6	76.2	
89	26.0	RD110 x 1/6	88.9	
102小	27.0	RD125 x 1/6	101.6	
102大	28.0	RD132 x 1/6	101.6	

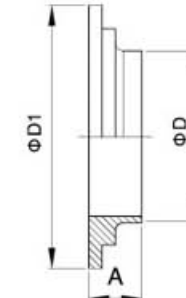
圆弧型平接头 Circular Liner
SMS 1021016



Size	A	D	D1	kg
19	11.0	19.1	30.8	
25	12.0	25.4	35.7	
32	12.0	31.8	43.7	
38	12.0	38.1	55.7	
51	12.0	50.8	65.7	
63	13.0	63.5	80.7	
76	13.0	76.2	93.5	
89	13.0	88.9	105.5	
102小	15.0	101.6	120.5	
102大	15.0	101.6	127.5	

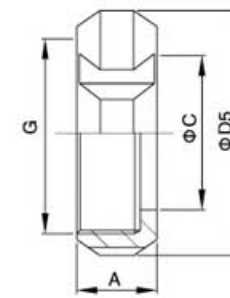
卫生级由任系列
Sanitary Union Series

台阶型平接头 Stepped Liner
SMS 1021017



Size	A	D	D1	kg
19	12.0	19.1	30.8	
25	13.0	25.4	35.7	
32	13.0	31.8	43.7	
38	13.0	38.1	55.7	
51	13.0	50.8	65.7	
63	14.0	63.5	80.7	
76	14.0	76.2	93.5	
89	15.0	88.9	105.5	
102小	17.0	101.6	120.5	
102大	17.0	101.6	127.5	

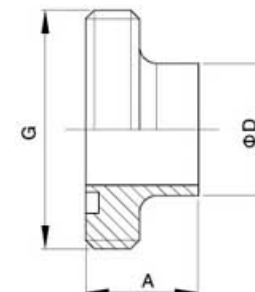
圆螺母(长型) Round Nut (Long-type)
SMS 1023018



Size	A	G	D5	C	kg
25	19.0	RD40 x 1/6	50.0	30.5	
38	21.0	RD60 x 1/6	72.0	48.5	
51	22.0	RD70 x 1/6	82.0	58.5	
63	24.0	RD85 x 1/6	98.0	73.5	
76	26.0	RD98 x 1/6	114.0	86.0	
102小	28.0	RD125 x 1/6	140.0	113.0	
102大	30.0	RD132 x 1/6	150.0	118.0	

螺纹接头(长型) Male (Long-type)
SMS 1023019

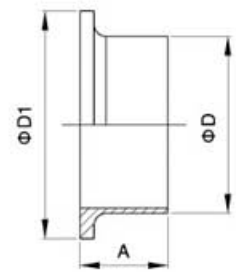
★ 有关密封圈请参照本画册P33页 ★ Please refer to page 33 for the gaskets.



Size	A	D	G	kg
25	19.0	25.0	RD40 x 1/6	
38	23.0	38.0	RD60 x 1/6	
51	23.0	51.0	RD70 x 1/6	
63	27.0	63.5	RD85 x 1/6	
76	27.0	76.1	RD98 x 1/6	
102小	27.0	101.6	RD125 x 1/6	
102大	30.0	101.6	RD132 x 1/6	

卫生级由任系列
Sanitary Union Series

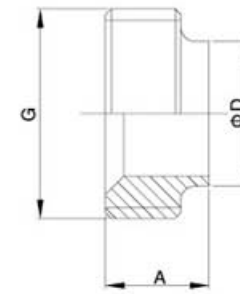
圆弧型平接头 Circular Liner
SMS 1021020



Size	A	D	D1	kg
25	15.0	25.4	35.7	
38	20.0	38.1	55.7	
51	20.0	50.8	65.7	
63	21.0	63.5	80.7	
76	21.0	76.2	93.5	
102小	21.0	101.6	120.5	
102大	21.0	101.6	127.5	

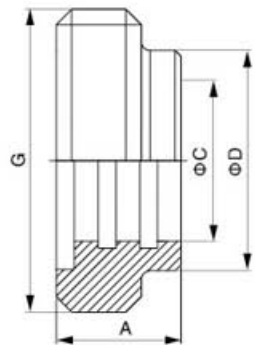
卫生级由任系列
Sanitary Union Series

螺纹接头 Male
3A 1023023



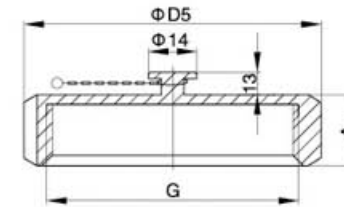
Size	G	D	A		kg
			15TRF	15A	
1"	37.13 x 1/8TACME	25.4	18.3	34.9	
1 1/2"	50.65 x 1/8TACME	38.1	18.3	38.1	
2"	64.1 x 1/8TACME	50.8	19.1	38.1	
2 1/2"	77.67 x 1/8TACME	63.5	22.2	44.5	
3"	91.19 x 1/8TACME	76.2	23.1	44.5	
4"	119.25 x 1/8TACME	101.6	26.2	44.5	

膨胀型螺纹接头 Expanded Male
SMS 1024021



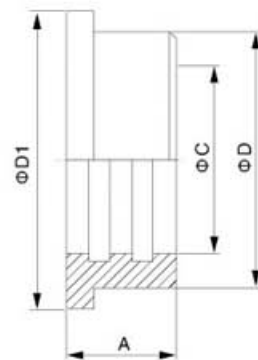
Size	A	G	D	C	kg
19	20.0	RD34 x 1/8	25.0	19.2	
25	20.0	RD40 x 1/6	31.5	25.5	
32	20.0	RD48 x 1/6	38.0	31.9	
38	23.0	RD60 x 1/6	46.0	38.2	
51	25.0	RD70 x 1/6	59.0	50.9	
63	30.0	RD85 x 1/6	72.0	63.6	
76	30.0	RD98 x 1/6	85.0	76.3	
89	32.0	RD110 x 1/6	98.0	89.0	
102小	35.0	RD125 x 1/6	112.0	101.7	
102大	35.0	RD132 x 1/6	112.0	101.7	

带链条盲螺母 Blind Cap with chain
SMS 1023024



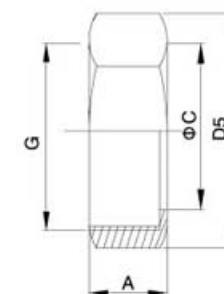
Size	A	G	D5	kg
19	18.0	RD34 x 1/8	44.0	
25	19.0	RD40 x 1/6	50.0	
32	21.0	RD48 x 1/6	60.0	
38	21.0	RD60 x 1/6	72.0	
51	22.0	RD70 x 1/6	82.0	
63	24.0	RD85 x 1/6	98.0	
76	26.0	RD98 x 1/6	114.0	
89	28.0	RD110 x 1/6	125.0	
102小	28.0	RD125 x 1/6	140.0	
102大	30.0	RD132 x 1/6	150.0	

膨胀型平接头 Expanded Liner
SMS 1024022



Size	A	D1	D	C	kg
19	24.0	30.0	25.0	19.2	
25	17.0	35.0	31.5	25.5	
32	17.0	43.0	38.0	31.9	
38	20.0	55.0	46.0	38.2	
51	20.0	65.0	59.0	50.9	
63	25.0	80.0	72.0	63.6	
76	25.0	93.0	85.0	76.3	
89	27.0	105.0	98.0	89.0	
102小	30.0	120.5	112.0	101.7	
102大	30.0	127.5	112.0	101.7	

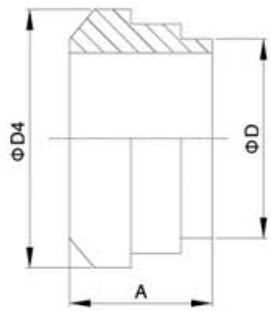
六角螺母 Hexagon Nut
3A 1023025



Size	A	G	D5	C	kg
1"	23.0	38.02 x 1/8TACME	46.0	30.3	
1 1/2"	24.6	51.54 x 1/8TACME	61.1	43.4	
2"	27.0	65.05 x 1/8TACME	76.2	56.5	
2 1/2"	29.6	78.56 x 1/8TACME	91.3	69.6	
3"	32.5	92.08 x 1/8TACME	106.4	82.7	
4"	38.1	120.14 x 1/8TACME	137.6	108.9	

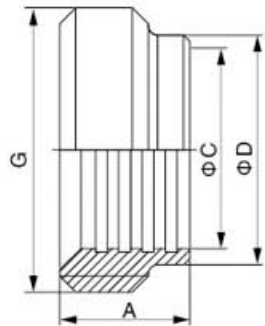
卫生级由任系列
Sanitary Union Series

平接头 Liner
3A 1021026



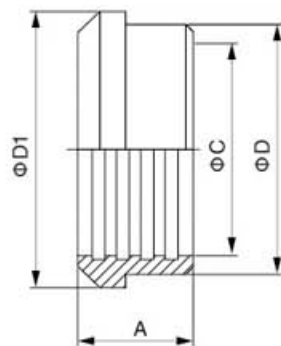
Size	D	D4	A		kg
			14PRF	14A	
1"	25.4	33.3	18.3	34.9	
1 1/2"	38.1	46.8	18.3	38.1	
2"	50.8	60.3	19.1	38.1	
2 1/2"	63.5	73.8	22.3	44.5	
3"	76.2	87.3	23.1	44.5	
4"	101.6	114.3	26.2	44.5	

膨胀型螺纹接头 Expanded Male
3A 1024027



Size	A	G	D	C	kg
1"	20.6	37.13 x 1/8TACME	29.5	25.5	
1 1/2"	28.6	50.65 x 1/8TACME	42.6	38.2	
2"	34.9	64.1 x 1/8TACME	55.7	50.9	
2 1/2"	38.1	77.67 x 1/8TACME	68.8	63.6	
3"	41.3	91.19 x 1/8TACME	81.9	76.3	
4"	41.3	119.25 x 1/8TACME	108.1	101.7	

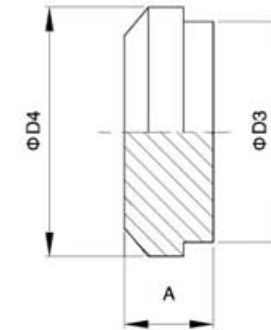
膨胀型平接头 Expanded Liner
3A 1024028



Size	A	D1	D	C	kg
1"	19.1	33.3	29.5	25.5	
1 1/2"	28.6	46.8	42.6	38.2	
2"	33.3	60.3	55.7	50.9	
2 1/2"	34.9	73.8	68.8	63.6	
3"	36.5	87.3	81.9	76.3	
4"	38.1	114.3	108.1	101.7	

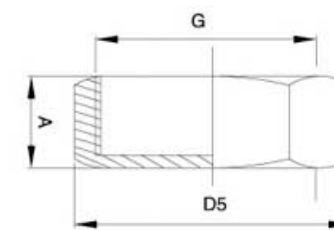
卫生级由任系列
Sanitary Union Series

堵头(16A) End Cap
3A 1021029



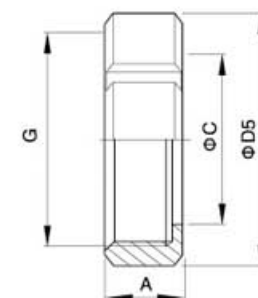
Size	A	D3	D4	kg
1"	11.9	29.5	33.3	
1 1/2"	14.3	42.6	46.8	
2"	15.9	55.7	60.3	
2 1/2"	16.7	68.8	73.8	
3"	18.3	81.9	87.3	
4"	20.6	108.1	114.3	

盲螺母 Blind Cap
3A 1023030



Size	A	G	D5	kg
1"	23.0	38.02 x 1/8TACME	52.0	
1 1/2"	24.6	51.54 x 1/8TACME	70.6	
2"	27.0	65.05 x 1/8TACME	88.0	
2 1/2"	29.6	78.56 x 1/8TACME	105.5	
3"	32.5	92.08 x 1/8TACME	123.0	
4"	38.1	120.14 x 1/8TACME	159.0	

圆螺母 Round Nut
ISO/IDF 13R 1023031

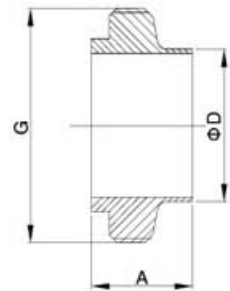


Size	A	G	D5	C	kg
1"	30.0	34.34 x 8TACME	48.0	30.5	
1 1/2"	30.0	47.86 x 8TACME	64.0	43.5	
2"	30.0	61.37 x 8TACME	77.0	57.0	
2 1/2"	30.0	74.97 x 8TACME	91.0	70.7	
3"	30.0	88.48 x 8TACME	104.0	83.3	
4" (ISO)	30.0	119.4 x 8TACME	135.0	110.0	
4" (IDF)	35.0	115.41 x 8TACME	138.0	112.0	

卫生级由任系列
Sanitary Union Series

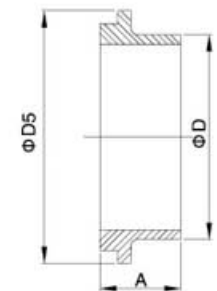
螺纹接头 Male
ISO/IDF 1023032

★ 有关密封圈请参照本画册P33页 ★ Please refer to page 33 for the gaskets.



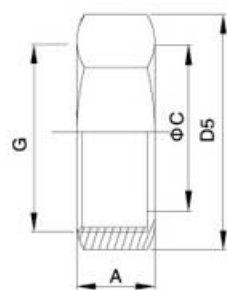
Size	A	G	D		kg
			IDF	ISO	
1"	21.5	37.13×8TACME	25.4	25.6	
1 1/2"	21.5	50.65×8TACME	38.1	38.6	
2"	21.5	64.16×8TACME	50.8	51.6	
2 1/2"	21.5	77.67×8TACME	63.5	64.1	
3"	21.5	91.19×8TACME	76.2	76.7	
4" (ISO)	21.5	118.4×8TACME	/	102.5	
4" (IDF)	30.0	125.9×6TACME	101.6	/	

平接头 Liner
ISO/IDF 1021033



Size	A	D5	D		kg
			IDF	ISO	
1"	21.5	33.8	25.4	25.6	
1 1/2"	21.5	47.0	38.1	38.6	
2"	21.5	60.5	50.8	51.6	
2 1/2"	21.5	74.0	63.5	64.1	
3"	21.5	87.5	76.2	76.7	
4" (ISO)	21.5	114.1	/	102.5	
4" (IDF)	30.0	120.6	101.6	/	

六角螺母 Hexagon Nut
ISO/IDF 13H 1023034

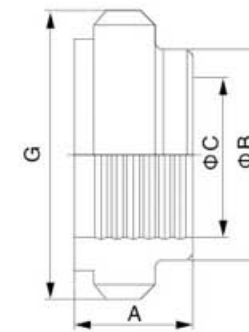


Size	A	G	D5	C	kg
1"	30.0	34.34×8TACME	53.1	30.5	
1 1/2"	30.0	47.86×8TACME	69.3	43.5	
2"	30.0	61.37×8TACME	86.6	57.0	
2 1/2"	30.0	74.88×8TACME	103.9	70.7	
3"	30.0	88.40×8TACME	121.3	83.3	
4" (ISO)	30.0	119.4×8TACME	155.9	110.0	
4" (IDF)	35.0	122.05×8TACME	165.1	112.0	

卫生级由任系列
Sanitary Union Series

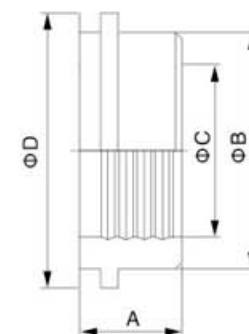
膨胀型螺纹接头 Expanded Male
IDF 1024035

★ 有关密封圈请参照本画册P33页 ★ Please refer to page 33 for the gaskets.



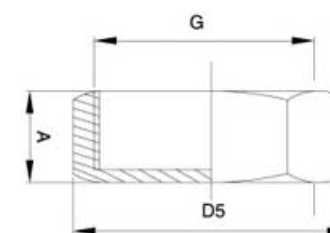
Size	A	G	B	C	kg
1"	16.5	37.13×18TACME	29.2	25.5	
1 1/2"	19.5	50.65×18TACME	42.7	38.2	
2"	19.5	64.16×18TACME	56.2	50.9	
2 1/2"	25.0	77.67×18TACME	69.9	63.6	
3"	30.0	91.19×18TACME	82.6	76.3	
4"	35.0	125.9×6TACME	111.0	101.7	

膨胀型平接头 Expanded Liner
IDF 1024036



Size	A	D	B	C	kg
1"	20.0	33.8	29.2	25.5	
1 1/2"	20.0	47.0	42.7	38.2	
2"	25.0	60.5	56.2	50.9	
2 1/2"	30.0	74.0	69.9	63.6	
3"	30.0	87.5	82.6	76.3	
4"	30.0	120.6	111.0	101.7	

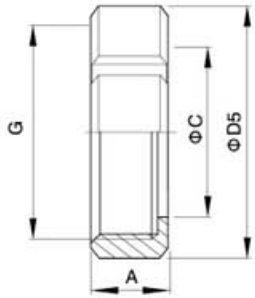
盲螺母 Blind Cap
ISO/IDF 1023037



Size	A	G	D5	kg
1"	30.0	38.3×8TACME	46.0	
1 1/2"	30.0	51.8×8TACME	60.0	
2"	30.0	65.3×8TACME	75.0	
2 1/2"	30.0	78.8×8TACME	90.0	
3"	30.0	92.3×8TACME	105.0	
4" (ISO)	30.0	119.4×8TACME	135.0	
4" (IDF)	35.0	127.2×6TACME	143.0	

卫生级由任系列
Sanitary Union Series

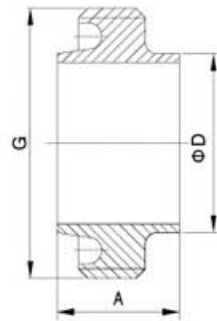
圆螺母 Round Nut
RJT 1023038



Size	A	G	C	D5	kg
1"	22.0	42.266 × 8TWHIT	33.45	58.5	
1 1/2"	22.0	54.966 × 8TWHIT	46.0	74.0	
2"	22.0	67.920 × 6TWHIT	58.67	85.5	
2 1/2"	22.0	80.620 × 6TWHIT	71.4	98.5	
3"	22.0	93.320 × 6TWHIT	84.1	111.6	
4"	22.0	119.0 × 6TWHIT	109.7	138.0	

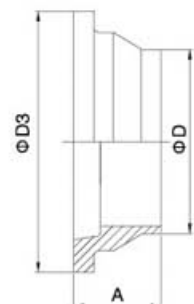
螺纹接头 Male
RJT 1023039

★ 有关密封圈请参照本画册P33页 ★ Please refer to page 33 for the gaskets.



Size	A	G	D	kg
1"	27.0	45.72 × 8T	25.4	
1 1/2"	27.0	58.42 × 8T	38.1	
2"	27.0	72.72 × 6T	50.8	
2 1/2"	27.0	85.42 × 6T	63.5	
3"	27.0	98.12 × 6T	76.2	
4"	27.0	123.52 × 6T	101.6	

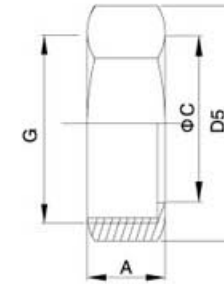
平接头 Liner
RJT 1021040



Size	A	D	D3	kg
1"	19.5	25.4	41.3	
1 1/2"	19.5	38.1	54.0	
2"	19.5	50.8	66.7	
2 1/2"	19.5	63.5	79.4	
3"	19.5	76.2	92.1	
4"	19.5	101.6	117.5	

卫生级由任系列
Sanitary Union Series

六角螺母 Hexagon Nut
RJT 1023041

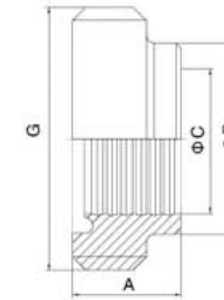


Size	A	G	C	D5	kg
1"	22.0	42.266 × 8TWHIT	33.45	58.7	
1 1/2"	22.0	54.966 × 8TWHIT	46.0	75.1	
2"	22.0	67.920 × 6TWHIT	58.67	91.7	
2 1/2"	22.0	80.620 × 6TWHIT	71.4	106.4	
3"	22.0	93.320 × 6TWHIT	84.1	120.3	
4"	22.0	118.720 × 6TWHIT	109.7	150.4	

膨胀型螺纹接头 Expanded Male

★ 有关密封圈请参照本画册P33页 ★ Please refer to page 33 for the gaskets.

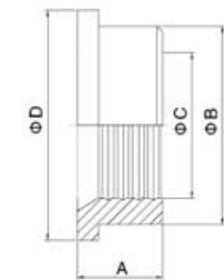
RJT 1024042



Size	A	G	B	C	kg
1"	20.0	45.72 × 8T	32.5	25.5	
1 1/2"	24.0	58.42 × 8T	45.5	38.2	
2"	28.0	72.72 × 8T	57.9	50.9	
2 1/2"	32.0	85.42 × 6T	70.6	63.6	
3"	32.0	98.12 × 6T	83.3	76.3	
4"	32.0	123.52 × 6T	108.7	101.6	

膨胀型平接头 Expanded Liner

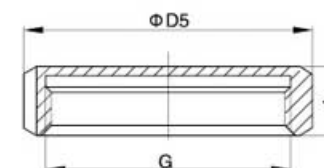
RJT 1024043



Size	A	D	B	C	kg
1"	20.0	41.3	32.5	25.5	
1 1/2"	24.0	54.0	45.5	38.2	
2"	28.0	66.7	57.9	50.9	
2 1/2"	32.0	79.4	70.6	63.6	
3"	32.0	92.1	83.3	76.3	
4"	32.0	117.5	108.7	101.6	

盲螺母 Blind Cap

RJT 1023044



Size	A	G	D5	kg
1"	22.0	45.7 × 8TWHIT	58.5	
1 1/2"	22.0	58.4 × 8TWHIT	74.0	
2"	22.0	72.7 × 6TWHIT	85.5	
2 1/2"	22.0	85.4 × 6TWHIT	98.5	
3"	22.0	98.1 × 6TWHIT	111.6	
4"	22.0	123.8 × 6TWHIT	138.0	